


**A.R.I.D.E. PENNSYLVANIA**  
**Advanced Roadside Impaired  
 Driving Enforcement.....**

THE OTHER IMPAIRED DRIVER

George Geisler, DRE

**TEAM DUI**  
 PENNSYLVANIA DUI ASSOCIATION  
www.padiu.org



---

---

---

---

---

---

---

---

**The Magnitude of the  
 Drugged Driving Problem**

- Difficult to assess
  - Drug use numbers are based primarily on self reporting
  - National Survey on Drug Use and Health (NSDUH) 2003
- An estimated 35 million Americans aged 12 or older used drugs in the year prior to being surveyed
- An estimated 10.9 million people drove under the influence of drugs

---

---

---

---

---

---

---

---

**The Magnitude of PA's Drugged Driving  
 Problem**

In PA for 2008, 16.1% of total DUI arrests (9,100) were DUI-D arrests – consistent with the NHTSA drugged driving roadside survey released mid-2009.

- In 2009, however, PA DUI-D arrests jumped to 10,517 – 15% jump from 2008
- We are still only scratching the surface!

---

---

---

---

---

---

---

---

## Pennsylvania DUI-D Background

- Prior to 2004, very few DUI-D's were prosecuted.
- New PA DUI law in 2004 made it easier to prosecute DUI-D. Better defined "drug".
- Enhanced penalties.



---

---

---

---

---

---

---

---

## Difficulties in DUI-D Prosecutions

- In the vast majority of states, there is no "per se" legal limit for DUI-D for every possible drug.
- The effects of alcohol are much better known and understood than the effects of other drugs
  - The public (and officers) is most familiar with alcohol
  - Drugs (other than alcohol) cannot be studied in the same manner as alcohol because of ethical reasons
- Blood testing takes longer than breath testing, is more invasive and more costly.
- No urine testing for DUI in PA

---

---

---

---

---

---

---

---

## Resulting Consequences

- Drug impaired drivers typically escape prosecution
- No consequences for drugged driving
- No punishment
- No rehabilitation



---

---

---

---

---

---

---

---

## PRACTICAL SOLUTION

# ARIDE

- Advanced Roadside Impaired Driving Enforcement

---

---

---

---

---

---

---

---

## ARIDE COMES TO PA

- First PA ARIDE class February, 2007 of 50+ officers.
- From that point forward, at least two classes per year averaging 50 officers and prosecutors.



---

---

---

---

---

---

---

---

## ARIDE Basic Principles

- Drugs cause readily observable signs and symptoms
- Drugs can be categorized according to the signs and symptoms they cause

---

---

---

---

---

---

---

---

## Desired Outcomes

- Improve identification and assessment of the impaired driver by adding a new level of training between SFST and DEC Program.
- More DUI-D arrests! Safer highways!
- Increased utilization of DREs
- Identify/interest future DRE candidates
- Include police & prosecutors in same training

---

---

---

---

---

---

---

---

## Other Benefits of ARIDE

- More officers enroll in SFST (Standard Field Sobriety Testing) classes to prepare for ARIDE training.
- Exposure to [www.sobrietytesting.com](http://www.sobrietytesting.com)
- First morning of first day is SFST refresher.
- Stirs interest for going on to DRE (Drug Recognition Expert) school
- Makes DRE school easier
- Feedback from ARIDE trained officers:  
"Best training I've ever received; most useful training I've ever received."

---

---

---

---

---

---

---

---

## Results of Pilot Program

- Obvious that the SFST refresher, an integral part of the ARIDE curriculum, is badly needed.
- Most SFST trained officers haven't attended update training since initial training.
- Drug impaired driving arrests increased.
- Alcohol-only DUI arrests increased.

---

---

---

---

---

---

---

---

## Immediate Results in PA

- Three of the officers in the first PA ARIDE class reported making DUI-D arrests on the very next shift they worked after the class
- Reported that those arrests would never have been made without the ARIDE training
- PennDOT encourages continuation of the training across the Commonwealth

---

---

---

---

---

---

---

---

## The ARIDE-Trained Officers



- Able to recognize and articulate the signs and symptoms of drug impairment beyond alcohol.
- As a result, they reduce impaired driving crashes, injuries and fatalities by removing more impaired drivers from roadways.
- Know to call out a DRE.

---

---

---

---

---

---

---

---

## ARIDE Pre-Requisite Training

- Previous completion of a IACP/NHTSA Standard Field Sobriety Testing practitioner course.
- More officers are enrolling in SFST classes to prepare for ARIDE.



---

---

---

---

---

---

---

---

## ARIDE Marketing

- Presentations to county chiefs of police associations to encourage officer participation in ARIDE and DRE training.
- Presentations to the magisterial district judges on ARIDE and DRE to lay a foundation of understanding of this quality training.
- Outreach directly to the officers.

---

---

---

---

---

---

---

---

## Preparation for ARIDE

- All prospective ARIDE students are requested to log onto [www.sobrietytesting.org](http://www.sobrietytesting.org), request a user name and password and review the latest SFST Student Manual.
- They understand from the outset that they will not progress through the ARIDE class if they are unable to demonstrate SFST proficiency at the beginning of the class after a comprehensive review on the first day.

---

---

---

---

---

---

---

---

## ARIDE Curriculum – Session I

- Introduction and Overview of Drugs and Highway Safety
- Understand the roles and responsibilities of the Drug Recognition Expert (DRE) and how this course supports the Drug Evaluation and Classification (DEC) program



---

---

---

---

---

---

---

---

## ARIDE Curriculum – Session II

SFST update  
and review



---

---

---

---

---

---

---

---

## ARIDE Curriculum – Session III

- SFST proficiency practical exam:
- Two attempts
- Must pass to remain in class



---

---

---

---

---

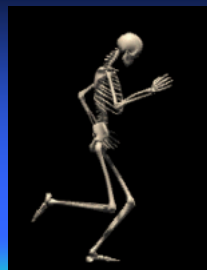
---

---

---

## ARIDE Curriculum – Session IV

- Drugs in the Human Body



---

---

---

---

---

---

---

---

## ARIDE Curriculum – Session V

- Observations of the Eyes and other Sobriety Tests for Impairment



---

---

---

---

---

---

---

---

## ARIDE Curriculum – Session VI

- SEVEN MAJOR DRUG CATEGORIES



---

---

---

---

---

---

---

---

## ARIDE Curriculum – Session VII

- DRUG COMBINATIONS



---

---

---

---

---

---

---

---

## ARIDE Curriculum – Session VIII

- Pre- and Post-Arrest Procedures
- PA DUI Laws and other PA – specific issues. Review of case law. How to overcome defense challenges.



---

---

---

---

---

---

---

---

## FINAL EXAM

- Must attain a score of 80% or more to receive ARIDE certificate of training.



---

---

---

---

---

---

---

---

## ARIDE Progress in PA

Since 2007:

- Eight ARIDE classes
- Approximately 500 state & municipal officers and prosecutors trained
- Receiving requests for ARIDE classes
- Five class requests pending
- Will do at least four ARIDE classes in 2010

---

---

---

---

---

---

---

---

## Success Stories

- ARIDE students going on to DRE school.
- They say ARIDE makes DRE school easier.
- Defense attorneys are writing about it.
- Unsolicited success stories coming in daily stating the DUI-D arrests were made as the result of ARIDE training.

---

---

---

---

---

---

---

---

## PA DUI & DUI-D Arrests



---

---

---

---

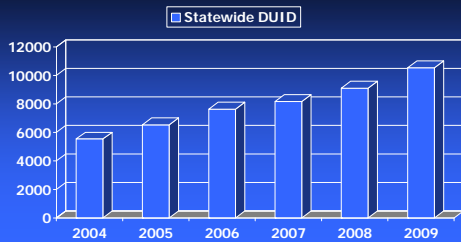
---

---

---

---

## PA Statewide DUI-D Arrests



---

---

---

---

---

---

---

---

### DUI-D Arrests in PA

- 2004 5,529 2 evals 1 DRE
- 2005 6,515 55 evals 9 DREs
- 2006 7,648 203 evals 17 DREs
- 2007 8,162 440 evals 36 DREs
- 2008 9,100 693 evals 50 DREs
- 2009 10,517 1,190 evals 65 DREs

---

---

---

---

---

---

---

---

### Impaired Driving Crashes in PA



---

---

---

---

---

---

---

---

### Impaired Driving Crashes in PA

- 2004 13,666
- 2005 13,290
- 2006 13,644
- 2007 12,867
- 2008 12,752
- 2009 12,695

---

---

---

---

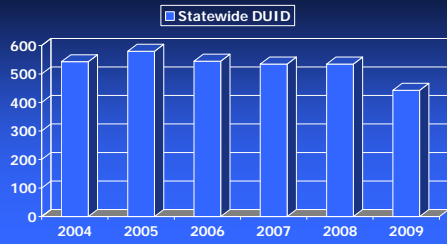
---

---

---

---

## PA Statewide DUI Fatalities



---

---

---

---

---

---

---

---

## DUI Fatalities in PA

- 2004 542
- 2005 579
- 2006 544
- 2007 535
- 2008 534
- 2009 442

---

---

---

---

---

---

---

---

## Challenges

- Some DREs don't support ARIDE training.
- Some ARIDE graduates don't call out DREs.



---

---

---

---

---

---

---

---

## More Challenges

- Limited number of DRE instructors.
- Some ranking officers don't realize the need/value of this training.



---

---

---

---

---

---

---

---

## Future of ARIDE in PA

- The only way to go is up!
- More DRE instructors will enable the ARIDE class to be presented to more officers.
- Someday part of police academy basic training or annual mandatory legal updates.

---

---

---

---

---

---

---

---

## Detection of Crime Through Traffic Stops

- "More crime is discovered as the result of traffic law enforcement than by any other method."
- *Tactics for Criminal Patrol*  
Calibre Press, 1995

---

---

---

---

---

---

---

---

## For Questions and Assistance

- George Geisler, DRE  
Law Enforcement Services
- PA DUI Association
- 2413 No. Front St.
- Harrisburg, PA 17110
- 717-238-4354
- [ggeisler@padui.org](mailto:ggeisler@padui.org)



---

---

---

---

---

---

---

---