



**The Impact of Laws,
Enforcement and Penalties
on Seat Belt Use**

Philadelphia, Pennsylvania

April 11-13, 2010

Workshop Participants

Moderator: Jim Fell

Presenter: Jim Nichols

Presenter: Tara Casanova

BACKGROUND

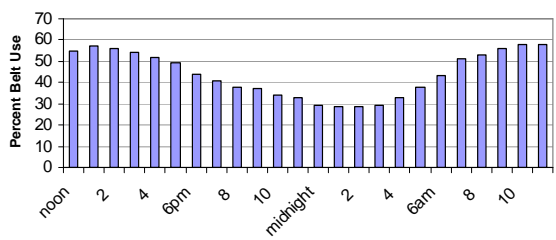
Usage

- **Seat-Belt Use in the U.S.: 83% in 2008**
- **Primary Enforcement States: 88%**
- **Secondary Enforcement States: 75%**
- **Passenger Cars: 84%**
- **Pick-Up Trucks: 74%**

Canada, Australia, other countries at 90-95%

Seat Belt Use Among Fatally Injured Occupants, by Time of Day, All Ages

All Ages: Source: FARS, 2005 data



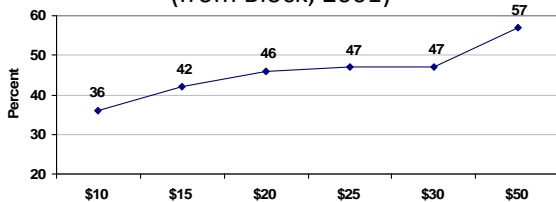
BACKGROUND

Fines

- Fines range in the U.S. from \$10 to \$100
- Winnicki (1995): \$10 increase in fines associated with 7% increase in usage in FARS
- Nichols & Ledingham (2008): Fines \$30+ = 84.3%; <\$30 = 80.7%
- Some fine levels in States haven't changed in 10-20 years

Percent of Non-Users Who Would Buckle Up by Fine Amounts

(from Block, 2001)



BACKGROUND

Points on License

- NM & DC: Points for seat-belt non-use
- NY, IN plus 8 other States: points for non-use of child restraints
- Canada: points on license in 9 of 12 jurisdictions

Responses to the Question: What would be the most effective way to get you to buckle up more frequently?

(Automotive Coalition for Traffic Safety, 2001)

